



Multi-Family Thru-the-Wall Heating & Cooling

Architectural Options to Compliment any Design

Enhance the appearance of your building with customizable louver grilles; designed to add functionality and appeal while adding protection to the condenser coil from weather and vandalism.

Architectural Louver Grilles are available in a wide variety of colors that can be color matched to the exterior of the design to ensure your vision remains intact.



The Comfort Pack

The Comfort Pack comes shipped with a factory installed stamped grille manufactured from pre-painted galvanized steel. Since the pre-painted steel is a neutral tan finish your design may already welcome the Comfort Pack unit as is with no additional louver option necessary.

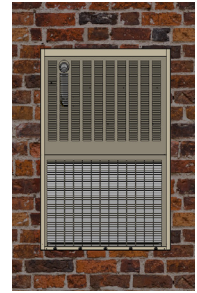
Here you can see what the Comfort Pack looks like standard.



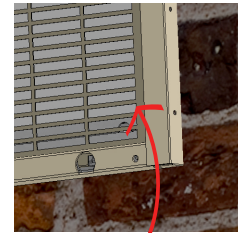
Color – Neutral tan finish



Comfort Pack
Non Condensing
Gas Furnace
& Electric Heat



Comfort Pack
Condensing Gas
Furnace



Grille is same color
as sleeve

The Powder Coated Stamped Grille

The powder coated stamped grille is an economical option for matching or blending the Comfort Pack into your overall building design. This stamped grille is similar to the one that comes standard with the Comfort Pack with a few differences. The grille is made to fit the exterior dimension of the CPWS wall sleeve. So rather than attaching it to the unit it attaches to the wall sleeve. Additionally this grille is made from galvanized steel, which is then powder coated to provide a clean look without the high material costs.

Sized to fit Comfort Pack Wall Sleeve

M# CPSG-P (Used on Comfort Pack Non Condensing Gas Furnace or Electric Heat Models)

M# CPSGX-P (Used on Comfort Pack Condensing Gas Furnace)

Available in these colors



RAL 7006
Beige Grey



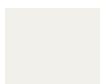
RAL 8014
Sepia Brown



RAL 8017
Chocolate
Brown



RAL 9010
Pure White



RAL 9016
Traffic White



RAL 9002
Grey White



RAL 3009
Oxide Red



RAL 3011
Brown Red



RAL 1019
Grey Beige



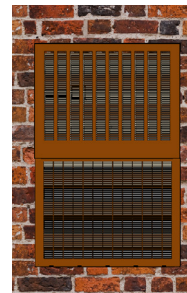
RAL 7030
Stone Grey



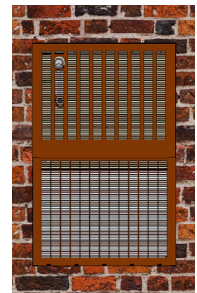
RAL 5014
Pigeon Blue



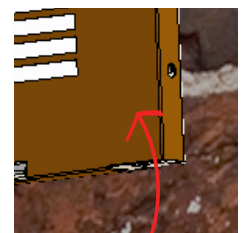
RAL 6000
Patina Green



CPSG-P



CPSGX-P



Wall Sleeve border
is NOT visible curbside

Additional colors available at www.ralcolorchart.com
Color samples available at www.tcipowder.com
Non stocked colors are an additional charge.

Custom color matching is available at an additional charge,
consult factory.

The Unit Mount Architectural Louver

The Unit Mount Architectural Louver is an extruded aluminum louver designed to fit the exterior dimension of the Comfort Pack unit itself. It is offered with a painted, baked enamel finish or an anodized clear finish.

Not recommended for new construction projects utilizing the CPWS wall sleeve.

Dimensions: 28" W x 43" H

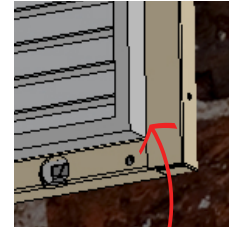
M# CPLG-P (Painted Baked Enamel Finish)

M# CPLG (Clear Anodized Finish)

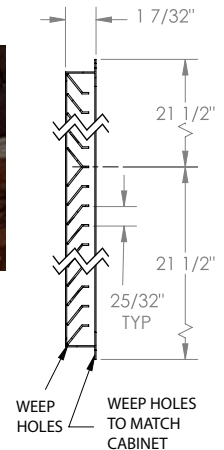
Not for use with Condensing Gas Furnace Models



Comfort Pack
Non Condensing
Gas Furnace



Wall Sleeve border
is visible curbside



The Sleeve Mount Architectural Louver

The Sleeve Mount Architectural Louver is an extruded aluminum louver designed to fit the exterior dimension of the CPWS wall sleeve. It is offered with a painted baked enamel finish or an anodized clear finish.

Recommended for new construction projects utilizing the CPWS wall sleeve.

Dimensions: 29 1/16" W x 45" H

M# CPLG-SP (Painted Baked Enamel Finish)

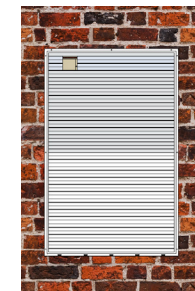
M# CPLG-S (Clear Anodized Finish)

M# CPLGX-SP (Painted Baked enamel Finish)

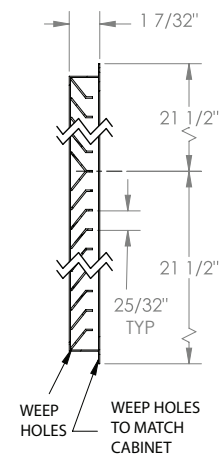
M# CPLGX-S (Clear Anodized Finish)



CPLG-SP
CPLG-S
Non Condensing
Gas Furnace
& Electric Heat



CPLGX-SP
CPLGX-S
Condensing Gas
Furnace



Wall Sleeve border
is NOT visible curbside

Available painted finishes for CPLG-SP, CPLGX-SP and CPLG-P



LB
Lite Bronze



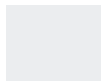
MB
Medium Bronze



DB
Dark Bronze



EW
Off White



GW
Gloss White



WS
White Stone



BR1
Brick Red 1



BR3
Brick Red 3



BR5
Brick 5



SLG
Slate Gray



MBL
Medium Blue



MGN
Medium Green

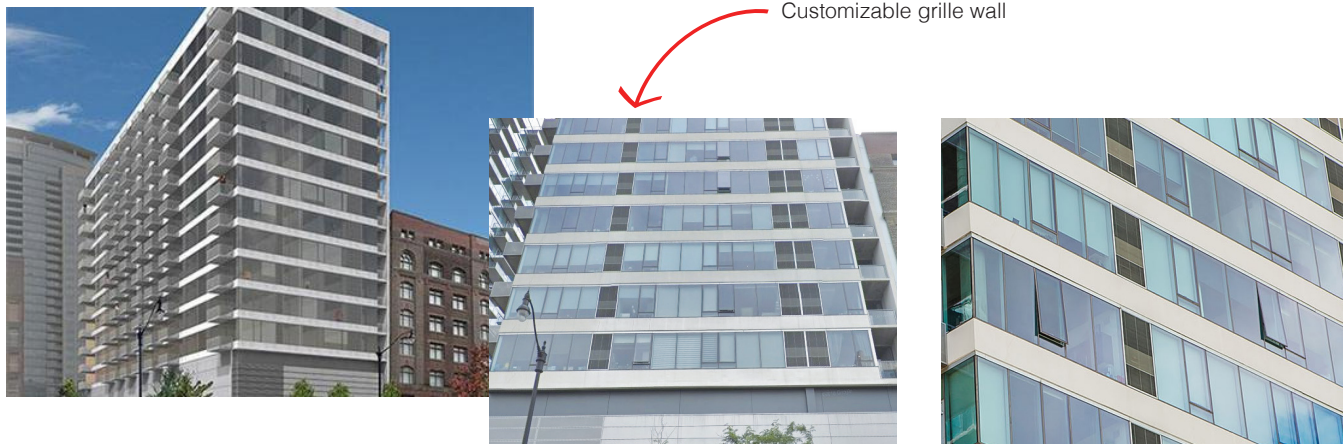
Additional colors available at www.reliablelouvers.com.

Custom color matching is available, consult factory.

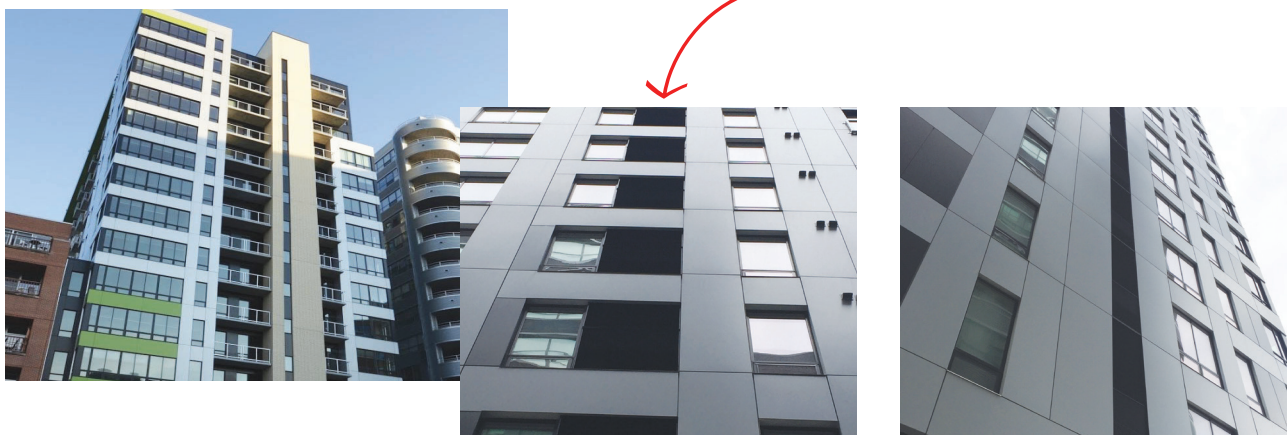
Customized Options are Welcomed!

While our neutral grille finish and architectural louver grilles complement any exterior wall, we will work with architects and design engineers to develop a custom louver that will intergrate with the overall design of the building. Contact us at 1-800-523-7138 for further assistance.

1345 Wabash (Chicago, IL)



151 East Wilson (Madison, WI)



National Comfort Products offers Architectural Louver Grilles for all models. Outdoor grilles provided by other manufacturers must be approved by National Comfort Products to maintain unit performance and warranty coverage.

All specifications are subject to change without notice.



National Comfort Products
A Division of National Refrigeration and Air Conditioning Products, Inc.
539 Dunksferry Road • Bensalem, PA 19020-5908
(800) 523-7138
www.nationalcomfortproducts.com

All specifications are subject to change without notice.

Comfort Pack Louver Grilles 2024