



# National Comfort Products

## Thru-the-Wall Multifamily Heating & Cooling



# ARCHITECTURAL LOUVER OPTIONS

COMFORT PACK | NCP & NHP THRU THE WALL UNITS

### *Compliment any Design*

Enhance the appearance of your building with customizable louver grilles; designed to add functionality and appeal while adding protection to the condenser coil from weather and vandalism.

Architectural Louver Grilles are available in a wide variety of colors that can be color matched to the exterior of the design to ensure your vision remains intact.

## *Go Thru-the-Wall*



## The Comfort Pack

The Comfort Pack comes shipped with a factory installed stamped grille manufactured from pre-painted galvanized steel. Since the pre-painted steel is a neutral tan finish your design may already welcome the Comfort Pack unit as is with no additional louver option necessary.

Here you can see what the Comfort Pack looks like standard.



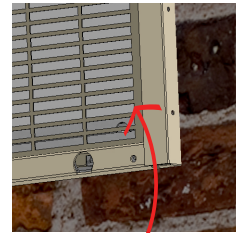
**Color** – Neutral tan finish



Comfort Pack  
Non Condensing  
Gas Furnace  
& Electric Heat



Comfort Pack  
Condensing Gas  
Furnace



Grille is same color  
as sleeve

## The Powder Coated Stamped Grille

The powder coated stamped grille is an economical option for matching or blending the Comfort Pack into your overall building design. This stamped grille is similar to the one that comes standard with the Comfort Pack with a few differences. The grille is made to fit the exterior dimension of the CPWS wall sleeve. So rather than attaching it to the unit it attaches to the wall sleeve. Additionally this grille is made from galvanized steel, which is then powder coated to provide a clean look without the high material costs.

Sized to fit Comfort Pack Wall Sleeve

M# CPSG-P (Used on Comfort Pack Non Condensing Gas Furnace or Electric Heat Models)

M# CPSGX-P (Used on Comfort Pack Condensing Gas Furnace)

Available in these colors



**RAL 7006**  
Beige Grey



**RAL 8014**  
Sepia Brown



**RAL 8017**  
Chocolate  
Brown



**RAL 9010**  
Pure White



**RAL 9016**  
Traffic White



**RAL 9002**  
Grey White



**RAL 3009**  
Oxide Red



**RAL 3011**  
Brown Red



**RAL 1019**  
Grey Beige



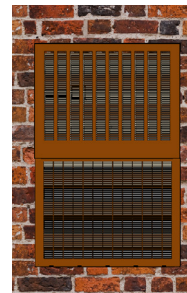
**RAL 7030**  
Stone Grey



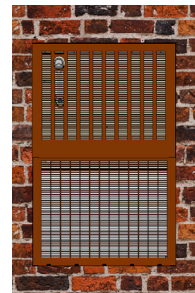
**RAL 5014**  
Pigeon Blue



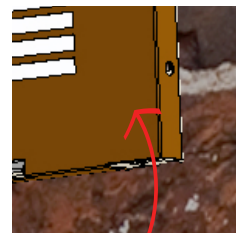
**RAL 6000**  
Patina Green



CPSG-P



CPSGX-P



Wall Sleeve border  
**is NOT visible** curbside

Additional colors available at [www.ralcolorchart.com](http://www.ralcolorchart.com)  
Color samples available at [www.tcipowder.com](http://www.tcipowder.com)  
Non stocked colors are an additional charge.

Custom color matching is available at an additional charge, consult factory.



## The Unit Mount Architectural Louver | Comfort Pack

The Unit Mount Architectural Louver is an extruded aluminum louver designed to fit the exterior dimension of the Comfort Pack unit itself. It is offered with a painted, baked enamel finish or an anodized clear finish.

**Not recommended for new construction projects utilizing the CPWS wall sleeve.**

Dimensions: 28" W x 43" H

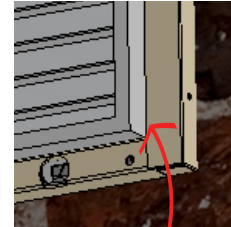
M# CPLG-P (Painted Baked Enamel Finish)

M# CPLG (Clear Anodized Finish)

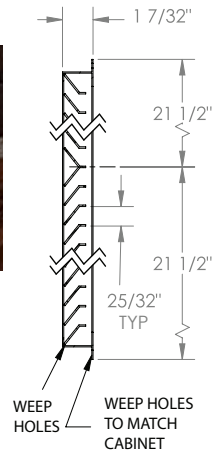
Not for use with Condensing Gas Furnace Models



Comfort Pack  
Non Condensing  
Gas Furnace



Wall Sleeve border  
**is visible** curbside



## The Sleeve Mount Architectural Louver

The Sleeve Mount Architectural Louver is an extruded aluminum louver designed to fit the exterior dimension of the CPWS wall sleeve. It is offered with a painted baked enamel finish or an anodized clear finish.

**Recommended for new construction projects utilizing the CPWS wall sleeve.**

Dimensions: 29 1/16" W x 45" H

M# CPLG-SP (Painted Baked Enamel Finish)

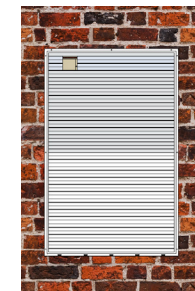
M# CPLG-S (Clear Anodized Finish)

M# CPLGX-SP (Painted Baked enamel Finish)

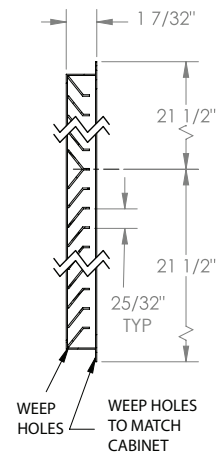
M# CPLGX-S (Clear Anodized Finish)



CPLG-SP  
CPLG-S  
Non Condensing  
Gas Furnace  
& Electric Heat



CPLGX-SP  
CPLGX-S  
Condensing Gas  
Furnace



Wall Sleeve border  
**is NOT visible** curbside

Available painted finishes for CPLG-SP, CPLGX-SP and CPLG-P



**LB**  
Lite Bronze



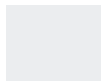
**MB**  
Medium Bronze



**DB**  
Dark Bronze



**EW**  
Off White



**GW**  
Gloss White



**WS**  
White Stone



**BR1**  
Brick Red 1



**BR3**  
Brick Red 3



**BR5**  
Brick 5



**SLG**  
Slate Gray



**MBL**  
Medium Blue



**MGN**  
Medium Green

Additional colors available at [www.reliablelouvers.com](http://www.reliablelouvers.com).

Custom color matching is available, consult factory.

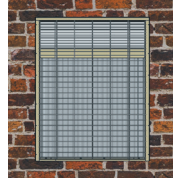




# Split-System Condensing Unit and Heat Pump Architectural Louver Grille

Our Thru-the-Wall Condensing Units and Heat Pumps come shipped with a wire grille in front of the condenser coil. Here you can see what the units look like standard.

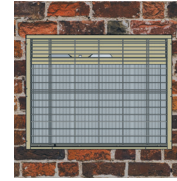
**Color** – Off White



1000 Series



3000 Series



4000 Series



5000 Series

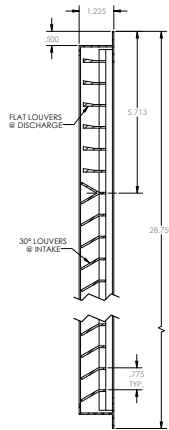
## The Unit Mount Architectural Louver

The Unit Mount Architectural Louver is an extruded aluminum louver designed to fit the exterior dimension of the unit itself. It is offered with a painted baked enamel finish or an anodized clear finish.

**Not recommended for new construction projects utilizing the wall sleeve.**



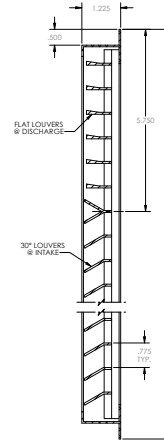
1000 Series  
Grille Size: 26" W x 28 5/8" H



Model: 14269035 (Anodized Aluminum Finish)  
Model: 14269035-P (Painted Finish)



3000 Series  
Grille Size: 23 3/4" W x 32" H



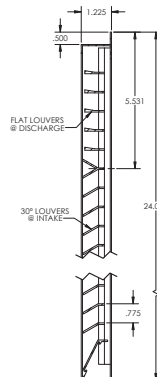
Model: 14269036 (Anodized Aluminum Finish)  
Model: 14269036-P (Painted Finish)



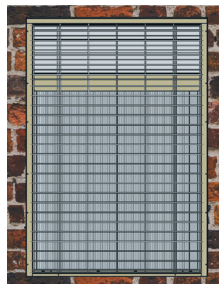
Wall Sleeve border  
is visible curbside



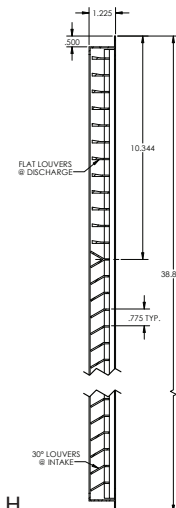
4000 Series  
Grille Size: 29 1/2" W x 23" H



Model: 14269037 (Anodized Aluminum Finish)  
Model: 14269037-P (Painted Finish)



5000 Series  
Grille Size: 26 5/8" W x 38 7/8" H



Model: 14269038 (Anodized Aluminum Finish)  
Model: 14269038-P (Painted Finish)



# The Sleeve Mount Architectural Louver | Split-System

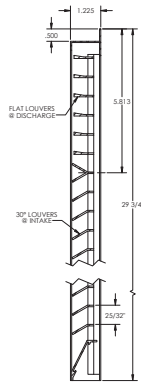
The Sleeve Mount Architectural Louver is an extruded aluminum louver designed to fit the exterior dimension of the wall sleeve. It is offered with a painted baked enamel finish or an anodized clear finish.

*Recommended for new construction projects utilizing the wall sleeve.*



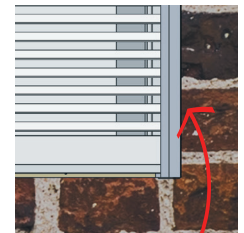
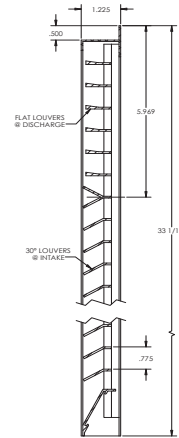
**1000 Series**  
Rough in at 26 7/8" W x 30 1/8" H

Model: 14269035-S (Anodized Aluminum Finish)  
Model: 14269035-SP (Painted Finish)



**3000 Series**  
Rough in 25 3/8" W x 33 1/2" H

Model: 14269036-S (Anodized Aluminum Finish)  
Model: 14269036-SP (Painted Finish)

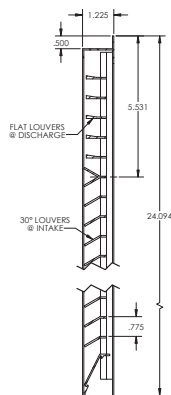


Wall Sleeve border  
**is NOT visible** curbside



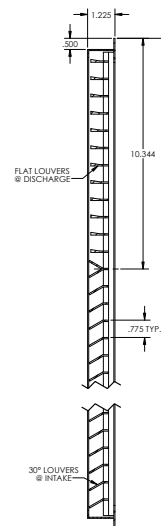
**4000 Series**  
Rough in at 31 1/8" W x 24 1/2" H

Model: 14269037-S (Anodized Aluminum Finish)  
Model: 14269037-SP (Painted Finish)



**5000 Series**  
Rough in at 28 1/2" W x 40 3/8" H

Model: 14269038-S (Anodized Aluminum Finish)  
Model: 14269038-SP (Painted Finish)



Available painted finishes for -P and -SP Models



**LB**  
Lite Bronze



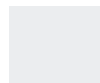
**MB**  
Medium Bronze



**DB**  
Dark Bronze



**EW**  
Off White



**GW**  
Gloss White



**WS**  
White Stone



**BR1**  
Brick Red 1



**BR3**  
Brick Red 3



**BR5**  
Brick 5



**SLG**  
Slate Gray



**MBL**  
Medium Blue



**MGN**  
Medium Green

Additional colors available at [www.reliablelouvers.com](http://www.reliablelouvers.com).  
Custom color matching is available, consult factory.

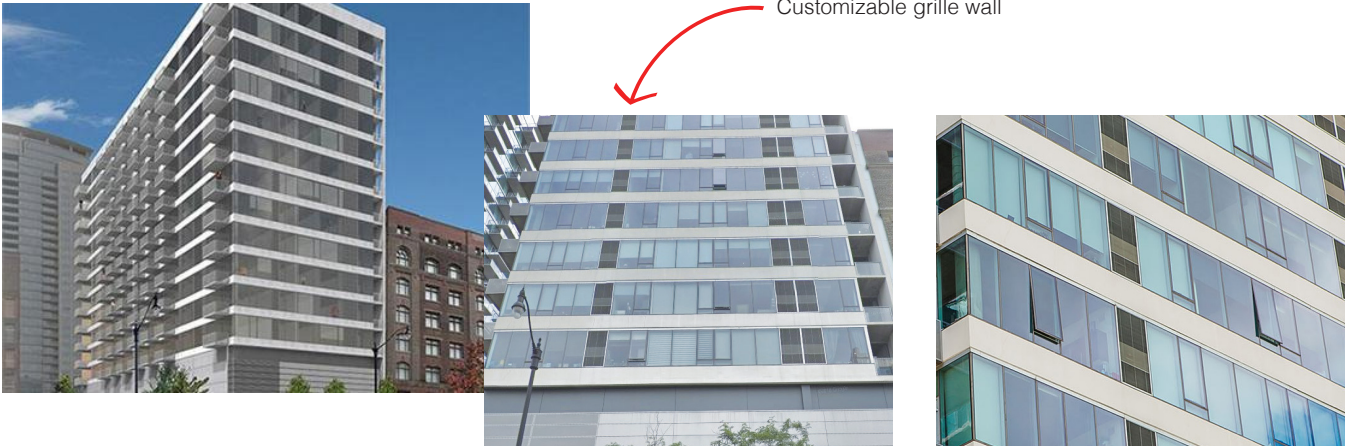


# Customized Options are Welcomed!

---

While our neutral grille finish and architectural louver grilles complement any exterior wall, we will work with architects and design engineers to develop a custom louver that will intergrate with the overall design of the building. Contact us at 1-800-523-7138 for further assistance.

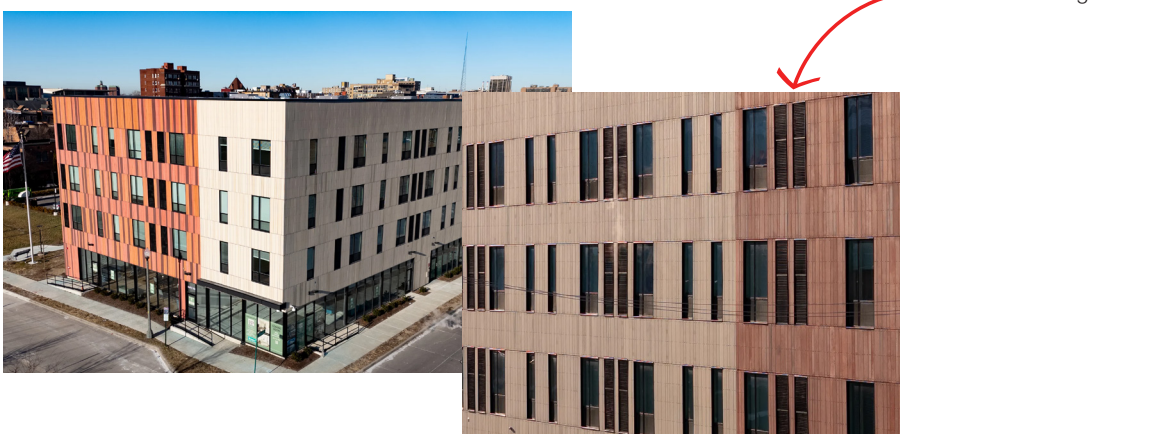
1345 Wabash (Chicago, IL)



151 East Wilson (Madison, WI)



269 Winder St (Detroit, MI)





# Customized Options are Welcomed!

950 Greene St (Ann Arbor, MI)



Customizable grille wall

National Comfort Products offers Architectural Louver Grilles for all models. Outdoor grilles provided by other manufacturers must be approved by National Comfort Products to maintain unit performance and warranty coverage.

All specifications are subject to change without notice.





**National Comfort Products**

*A Division of National Refrigeration and Air Conditioning Products, Inc.*

539 Dunksferry Road · Bensalem, PA 19020-5908

(800) 523-7138

[www.nationalcomfortproducts.com](http://www.nationalcomfortproducts.com)