

**PLEASE NOTE: ALL 2.5 TON UNITS (430 MODELS)
HAVE BEEN DISCONTINUED.**

PARTS GUIDE

R-410A SPLIT-SYSTEM CONDENSING UNITS

National Comfort Products

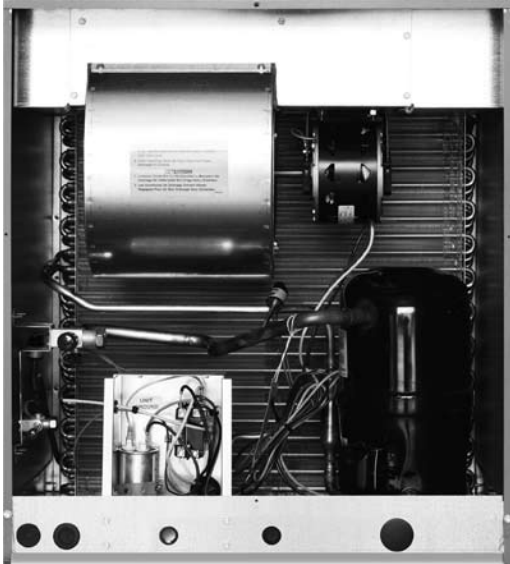
539 Dunksferry Road • Bensalem, PA 19020 • (215) 244-1400 • 1-800-523-7138 • Fax: (215) 244-9579

National Comfort Products

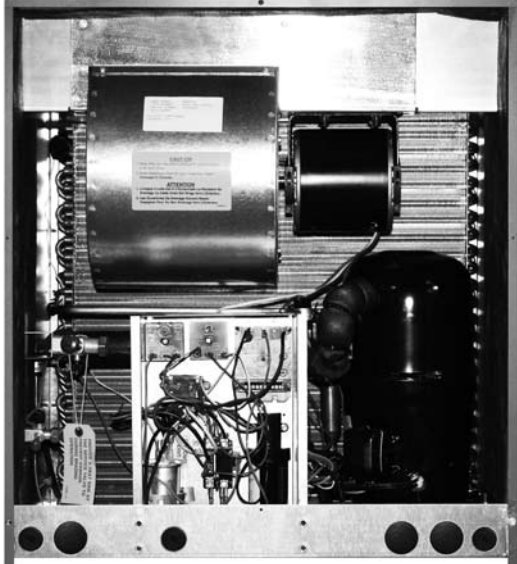
539 Dunksferry Road • Bensalem, PA 19020 • (215) 244-1400 • 1-800-523-7138 • Fax: (215) 244-9579

REPLACEMENT PARTS GUIDE

NCPC SERIES 1000 NCPC-418-1010, NCPC-424-1010, NCPC-430-1010



MADISON SERIES 1000



** MADISON SERIES ONLY

ITEM	DESCRIPTION	NCPC-418	NCPC-424	NCPC-430
1	Contactors	14262082	14262082	14262082
2	Dual Run Capacitor 30-5 mFd / 370V 35-5 mFd / 370V	14225376 N/A	N/A 14225375	N/A 14225375
3	Low Pressure Switch (Optional)	14265026	14265026	14265026
4	High Pressure Switch (Optional)	14265027	14265027	14265027
5	Compressor H82J15BABCA H82J19BABCA H82J24BABCA	14210102 N/A N/A	N/A 14210215 N/A	N/A N/A 14210216
6	Liquid Service Valve	14258603A	14258603A	14258603A
7	Vapor Service Valve	14258606A	14258606A	14258606A
8	Outdoor Coil	14208361	14208360	14208360
9 9a**	Blower Motor (MADISON) 0.25 HP 1140 RPM	14270038 14270038	14270038 14270036	14270038 14270036
10	Blower Wheel (7.6" OD x 8.0")	14267007	14267007	14267007
11	Blower Housing	14214013	14214013	14214013
12	Inlet Ring (2 req'd)	14214021	14214021	14214021
13	Motor Blower Mount	14256933X	14256933X	14256933X
14	Access Panel 1000	14256936Y	14256936Y	14256936Y
15	Top Panel 1000	14256939S	14256939S	14256939S

ITEM	DESCRIPTION	NCPC-418	NCPC-424	NCPC-430
16	Right Side Panel	14256938S	14256938S	14256938S
17	Left Side Panel	14256937S	14256937S	14256937S
18	Wire Grille 1000	14269001A	14269001A	14269001A
19 19a**	Muffler (MADISON)	N/A 14275639	14275639 N/A	14275639 N/A
20	Touch Up Paint	14299630	14299630	14299630

* Not shown

**ADDITIONAL PARTS - MADISON SERIES ONLY

ITEM	DESCRIPTION	1000 SERIES
21	Time Relay on Make	14262054
22	Time Relay on Break	14232053
23	Crankcase Heater	14206023
24	Low Ambient Control	14260017
25	Hard Start Kit	14216307
26	Spring Mounted Comp	14210030
27	High Pressure Switch	14265027
28	Low Pressure Switch	14265026
29	Control Relay	14262051

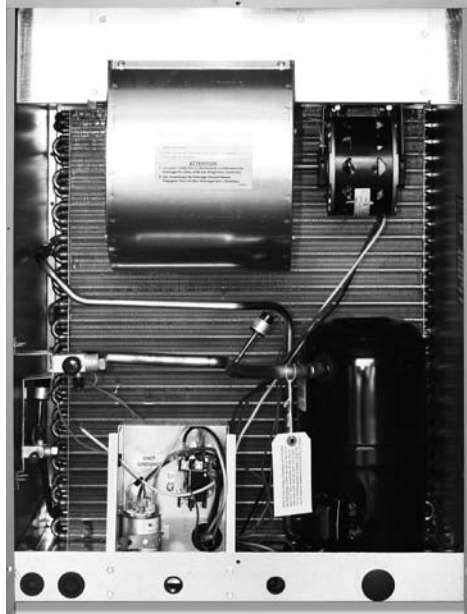
National Comfort Products

539 Dunksferry Road • Bensalem, PA 19020 • (215) 244-1400 • 1-800-523-7138 • Fax: (215) 244-9579

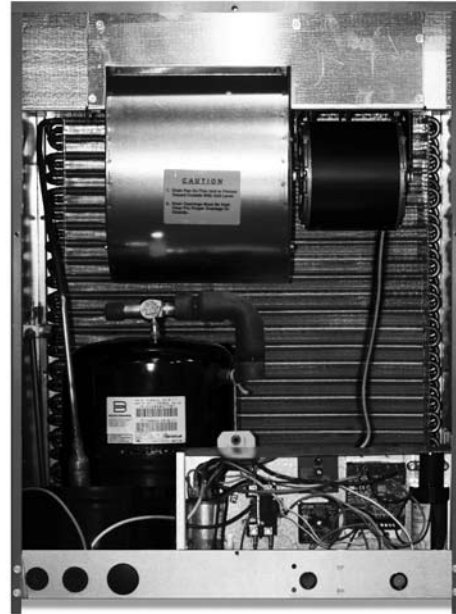
REPLACEMENT PARTS GUIDE

NCPC SERIES 3000

NCPC-418-3010, NCPC-424-3010, NCPC-430-3010



MADISON SERIES 3000



** MADISON SERIES ONLY

ITEM	DESCRIPTION	NCPC-418	NCPC-424	NCPC-430
1	Contactors	14262082	14262082	14262082
2	Dual Run Capacitor 30-5 mFd / 370V 35-5 mFd / 370V	14225376 N/A	N/A 14225375	N/A 14225375
3	Low Pressure Switch (Optional)	14265026	14265026	14265026
4	High Pressure Switch (Optional)	14265027	14265027	14265027
5	Compressor H82J15BABCA H82J19BABCA H82J24BABCA	14210102 N/A N/A	N/A 14210215 N/A	N/A N/A 14210216
6	Liquid Service Valve	14258603A	14258603A	14258603A
7	Vapor Service Valve	14258606A	14258606A	14258606A
8	Outdoor Coil	14208356	14208357	14208357
9 9a**	Blower Motor (MADISON) 0.25 HP 1140 RPM	14270038 14270038	14270038 14270036	14270038 14270036
10	Blower Wheel (7.6" OD x 8.0")	14267007	14267007	14267007
11	Blower Housing	14214013	14214013	14214013
12	Inlet Ring (2 req'd)	14214021	14214021	14214021
13	Motor Blower Mount	14256933X	14256933X	14256933X
14	Access Panel 3000	14256969S	14256969S	14256969S
15	Top Panel 3000	14256967S	14256967S	14256967S

ITEM	DESCRIPTION	NCPC-418	NCPC-424	NCPC-430
16	Right Side Panel	14256973S	14256973S	14256973S
17	Left Side Panel	14256974S	14256974S	14256974S
18	Wire Grille 3000	14269003A	14269003A	14269003A
19 19a**	Muffler (MADISON)	N/A 14275639	14275639 N/A	14275639 N/A
20	Touch Up Paint	14299630	14299630	14299630

* Not shown

**ADDITIONAL PARTS - MADISON SERIES ONLY

ITEM	DESCRIPTION	3000 SERIES
21	Time Relay on Make	14262054
22	Time Relay on Break	14232053
23	Crankcase Heater	14206023
24	Low Ambient Control	14260017
25	Hard Start Kit	14216307
26	Spring Mounted Comp	14210030
27	High Pressure Switch	14265027
28	Low Pressure Switch	14265026
29	Control Relay	14262051

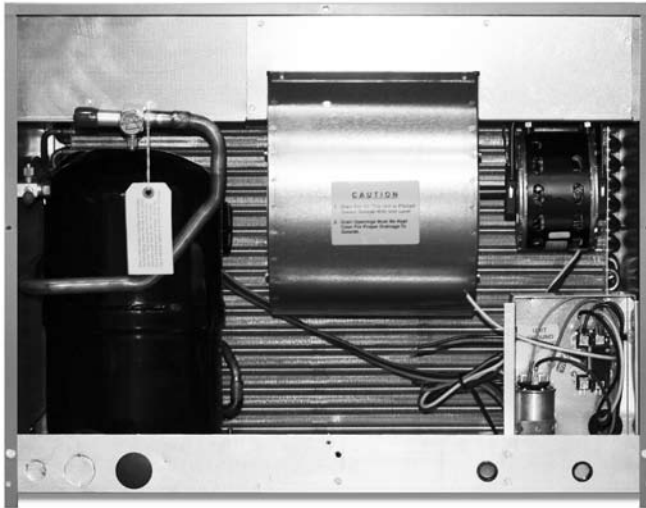
National Comfort Products

539 Dunksferry Road • Bensalem, PA 19020 • (215) 244-1400 • 1-800-523-7138 • Fax: (215) 244-9579

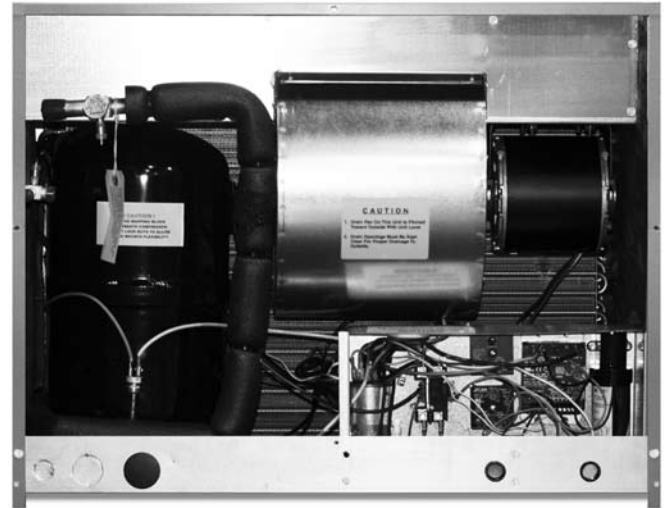
REPLACEMENT PARTS GUIDE

NCPC SERIES 4000

NCPC-418-4010, NCPC-424-4010, NCPC-430-4010



MADISON SERIES 4000



** MADISON SERIES ONLY

ITEM	DESCRIPTION	NCPC-418	NCPC-424	NCPC-430
1	Contactors	14262082	14262082	14262082
2	Dual Run Capacitor 30-5 mFd / 370V 35-5 mFd / 370V	14225376 N/A	N/A 14225375	N/A 14225375
3	Low Pressure Switch (Optional)	14265026	14265026	14265026
4	High Pressure Switch (Optional)	14265027	14265027	14265027
5	Compressor H82J15BABCA H82J19BABCA H82J24BABCA	14210102 N/A N/A	N/A 14210215 N/A	N/A N/A 14210216
6	Liquid Service Valve	14258603A	14258603A	14258603A
7	Vapor Service Valve	14258606A	14258606A	14258606A
8	Outdoor Coil	14208359	14208358	14208358
9 9a**	Blower Motor (MADISON) 0.25 HP 1140 RPM	14270038 14270038	14270038 14270036	14270038 14270036
10	Blower Wheel (7.6" OD x 8.0")	14267007	14267007	14267007
11	Blower Housing	14214013	14214013	14214013
12	Inlet Ring (2 req'd)	14214021	14214021	14214021
13	Motor Blower Mount	14256933X	14256933X	14256933X
14	Access Panel 4000	14256970S	14256970S	14256970S
15	Top Panel 4000	14256968S	14256968S	14256968S

ITEM	DESCRIPTION	NCPC-418	NCPC-424	NCPC-430
16	Right Side Panel	14256975S	14256975S	14256975S
17	Left Side Panel	14256976S	14256976S	14256976S
18	Wire Grille 4000	14269004A	14269004A	14269004A
19	Muffler	N/A	14275639	14275639
20	Touch Up Paint	14299630	14299630	14299630

‡ Not shown

**ADDITIONAL PARTS - MADISON SERIES ONLY

ITEM	DESCRIPTION	4000 SERIES
21	Time Relay on Make	14262054
22	Time Relay on Break	14232053
23	Crankcase Heater	14206023
24	Low Ambient Control	14260017
25	Hard Start Kit	14216307
26	Spring Mounted Comp	14210030
27	High Pressure Switch	14265027
28	Low Pressure Switch	14265026
29	Control Relay	14262051



**PLEASE NOTE: ALL 2.5 TON UNITS (430 MODELS)
HAVE BEEN DISCONTINUED.**