

**R-22  
UNITS IN  
STOCK**

NEWS BULLETIN

# The Daily News

50¢

VOL. 32 NO.10

TUESDAY, DECEMBER 15, 2009

## Demand for R22 Remains Strong

Build a Lasting Foundation with  
Your Customers by Correctly  
Informing Them of the EPA Ruling



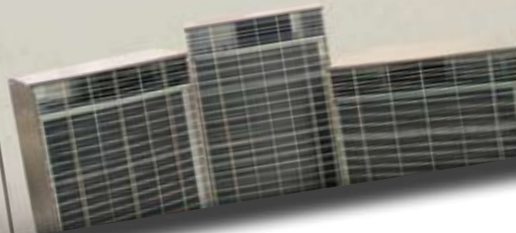
## Wholesalers Inform Their Dealers on New Codes

EPA Final Rule

This final rule does not affect the servicing of air conditioning or refrigeration appliances manufactured prior to January 1, 2010. Servicing is regulated under other authorities. Service and repair of existing equipment using HCFC-22 or HCFC-142b is not affected.



## We have the Answers



### No Access to Refrigerant Lines?

Many installed systems that were done years ago had their refrigerant lines buried in walls and floors with no access. They were piped using smaller diameter tubing that will not work with the new refrigerant. Making a new system costly and some times impossible.

Replacing that existing R22 condenser with a new R22 pre-2010 units makes the job affordable and provides comfort for years to come.

## Stocking R22 TTW Units

We have stock of  
the most popular  
sizes ready for  
our dealers.

All units sold on a first-come-first basis. When stockpile is gone, they can never be built again.

Pre-charged appliance components manufactured **BEFORE** January 1, 2010, **MAY BE USED** to service appliances manufactured **BEFORE** January 1, 2010.

The EPA clearly defines "servicing" to include component re-placements such as condensing units, compressors, line sets, and coils, and sets no specific limit as to how many components can be replaced during "servicing" throughout a system's lifetime, as long as any pre-charged components were manufactured prior to January 1, 2010.

The rule calls out exactly what dealers can do when it comes to servicing existing R22 equipment in the field. The Rule favors thru-the-wall units and ensures uninterrupted service to existing installed units.

Ask our friendly personnel for help in determining your TTW replacement needs.



**NATIONAL  
COMFORT  
PRODUCTS**

HEATING & AIR CONDITIONING EQUIPMENT

Contact us **today** and let our friendly sales team help you with all your **R22 TTW** needs.

A Division of National Refrigeration and Air Conditioning Products, Inc.  
539 Dunksferry Road • Bensalem, PA 19020  
(800) 523-7138 • Phone (215) 244-1400  
Fax (215) 639-1674  
[www.nationalcomfortproducts.com](http://www.nationalcomfortproducts.com)

# CONDENSING UNITS Series 1000, 3000 and 4000

**Series 1000**



**Series 3000**



**Series 4000**



SERIES 1000 NCPC-018-1010	SERIES 1000 NCPC-024-1010	SERIES 1000 NCPC-030-1010	SERIES 3000 NCPC-018-3010	SERIES 3000 NCPC-024-3010	SERIES 3000 NCPC-030-3010	SERIES 4000 NCPC-018-4010	SERIES 4000 NCPC-024-4010	SERIES 4000 NCPC-030-4010
<b>DIMENSIONS</b>						<b>*CALL FACTORY</b>		
26" wide	26" wide	26" wide	23 <sup>3</sup> / <sub>4</sub> " wide	23 <sup>3</sup> / <sub>4</sub> " wide	23 <sup>3</sup> / <sub>4</sub> " wide	29 <sup>1</sup> / <sub>2</sub> " wide	29 <sup>1</sup> / <sub>2</sub> " wide	29 <sup>1</sup> / <sub>2</sub> " wide
28 <sup>5</sup> / <sub>8</sub> " high	28 <sup>5</sup> / <sub>8</sub> " high	28 <sup>5</sup> / <sub>8</sub> " high	32" high	32" high	32" high	23" high	23" high	23" high
18 <sup>1</sup> / <sub>2</sub> " deep	18 <sup>1</sup> / <sub>2</sub> " deep	18 <sup>1</sup> / <sub>2</sub> " deep	18 <sup>1</sup> / <sub>2</sub> " deep	18 <sup>1</sup> / <sub>2</sub> " deep	18 <sup>1</sup> / <sub>2</sub> " deep	18 <sup>1</sup> / <sub>2</sub> " deep	18 <sup>1</sup> / <sub>2</sub> " deep	18 <sup>1</sup> / <sub>2</sub> " deep
180 lbs.	180 lbs.	180 lbs.	180 lbs.	180 lbs.	180 lbs.	180 lbs.	180 lbs.	180 lbs.
3/8" liquid valve	3/8" liquid valve	3/8" liquid valve	3/8" liquid valve	3/8" liquid valve	3/8" liquid valve	3/8" liquid valve	3/8" liquid valve	3/8" liquid valve
5/8" vapor valve	3/4" vapor valve	3/4" vapor valve	5/8" vapor valve	3/4" vapor valve	3/4" vapor valve	5/8" vapor valve	3/4" vapor valve	3/4" vapor valve
<b>ARI RATING</b>								
18,000 BTU	23,900 BTU	28,500 BTU	18,000 BTU	23,800 BTU	29,500 BTU	18,000 BTU	23,600 BTU	28,500 BTU
10.9 SEER	10.9 SEER	10.9 SEER	10.9 SEER	10.9 SEER	10.9 SEER	10.9 SEER	10.9 SEER	10.9 SEER
<b>ELECTRICAL</b>								
208/230 volts	208/230 volts	208/230 volts	208/230 volts	208/230 volts	208/230 volts	208/230 volts	208/230 volts	208/230 volts
60 hertz	60 hertz	60 hertz	60 hertz	60 hertz	60 hertz	60 hertz	60 hertz	60 hertz
1 phase	1 phase	1 phase	1 phase	1 phase	1 phase	1 phase	1 phase	1 phase
14 min. AWG wire	12 min. AWG wire	12 min. AWG wire	14 min. AWG wire	12 min. AWG wire	12 min. AWG wire	14 min. AWG wire	12 min. AWG wire	12 min. AWG wire
15 max. fuse	20 max. fuse	25 max. fuse	15 max. fuse	20 max. fuse	25 max. fuse	15 max. fuse	20 max. fuse	25 max. fuse
<b>COMPRESSOR</b>								
7.2 RLA (amps)	8.0 RLA (amps)	11.1 RLA (amps)	7.2 RLA (amps)	9.9 RLA (amps)	11.1 RLA (amps)	7.2 RLA (amps)	8.0 RLA (amps)	11.1 RLA (amps)
48.0 LRA	54.0 LRA	78.0 LRA	48.0 LRA	61.0 LRA	78.0 LRA	48.0 LRA	54.0 LRA	78.0 LRA
<b>FAN MOTOR</b>								
.25 HP	.25 HP	.25 HP	.25 HP	.25 HP	.25 HP	.25 HP	.25 HP	.5 HP
1.2 amps	1.2 amps	1.2 amps	1.2 amps	1.2 amps	1.2 amps	1.2 amps	1.2 amps	1.2 amps
<b>COIL</b>								
3 rows	3 rows	4 rows	3 rows	3 rows	4 rows	3 rows	3 rows	4 rows
3.61 face area	3.61 face area	3.61 face area	3.77 face area	3.77 face area	3.77 face area	3.14 face area	3.14 face area	3.14 face area
16 FPI	16 FPI	16 FPI	16 FPI	16 FPI	16 FPI	16 FPI	16 FPI	16 FPI
<b>INDOOR UNIT</b>								
Carrier*	Carrier*	Carrier*	Carrier*	Carrier*	Carrier*	Carrier*	Carrier*	Carrier*
FK4DNF0003	FK4DNF0005	FK4DNF0005	FK4DNF0003	FK4DNF0005	FK4DNF0005	FK4DNF0003	FK4DNF0005	FK4DNF0005
650 CFM	870 CFM	1000CFM	650 CFM	870 CFM	1000 CFM	650 CFM	870 CFM	870 CFM
<b>REPLACES</b>								
Bryant	Bryant	Bryant	Carrier	Carrier	Carrier	Dunham-Bush	Dunham-Bush	Dunham-Bush
Carrier	Carrier	Carrier	Fedders	Fedders	Fedders	Hydro-Therm Space Pack	Hydro-Therm Space Pack	Hydro-Therm Space Pack
Day & Night	Day & Night	Day & Night	Lennox	Lennox	Lennox	International	International	International
Dunham-Bush	Dunham-Bush	Dunham-Bush	Magic Chef	Magic Chef	Magic Chef	Johnson Air Ease	Johnson Air Ease	Johnson Air Ease
Lennox	Lennox	Lennox	Meyer	Meyer	Meyer	Lennox	Lennox	Lennox
Magic Chef	Magic Chef	Magic Chef	Rheem	Rheem	Rheem	Luxaire York	Luxaire York	Luxaire York
Meyer	Meyer	Meyer	U.S. A/C (AB)	U.S. A/C (AB)	U.S. A/C (AB)	U.S. A/C (CB)	U.S. A/C (CB)	U.S. A/C (CB)
Payne	Payne	Payne	* Condensing units are compatible with most manufacturers of indoor air handlers and coils.			Westinghouse	Westinghouse	Westinghouse
U.S. A/C (BB)	U.S. A/C (BB)	U.S. A/C (BB)						

Note: All specifications are subject to change without notice.



A Division of National Refrigeration and Air Conditioning Products, Inc.  
 539 Dunksferry Road • Bensalem, PA 19020  
**(800) 523-7138** • Phone (215) 244-1400  
 Fax (215) 639-1674  
[www.nationalcomfortproducts.com](http://www.nationalcomfortproducts.com)